



GLOBAL WELLNESS  
SUMMIT 2019

# Creating a Purpose-Driven Organization

**Dr. Binod Kumar Chaudhary**, Chairman, CG Corp.  
Global, Nepal

# CREATING A PURPOSE DRIVEN ORGANIZATION

DR. BINOD K. CHAUDHARY

CHAIRMAN

CG Corp Global / THE FARM AT SAN BENITO











Shapoorji Pallonji

# CG|SHIKSHALAYA

School Name: **Janajyoti Secondary School**

Address : **Janagal, Kavre**

Initiative

HARY | FOUNDATION

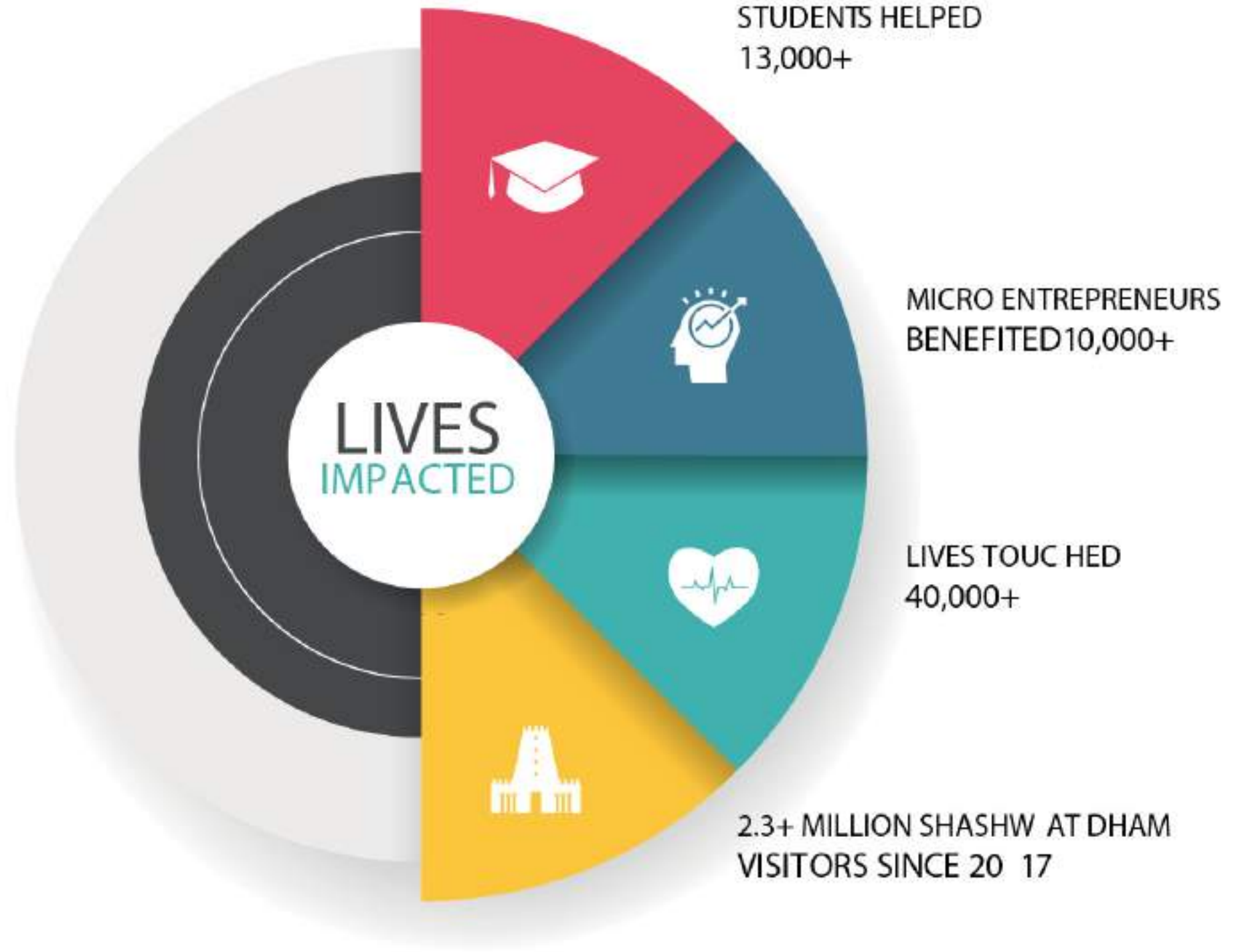


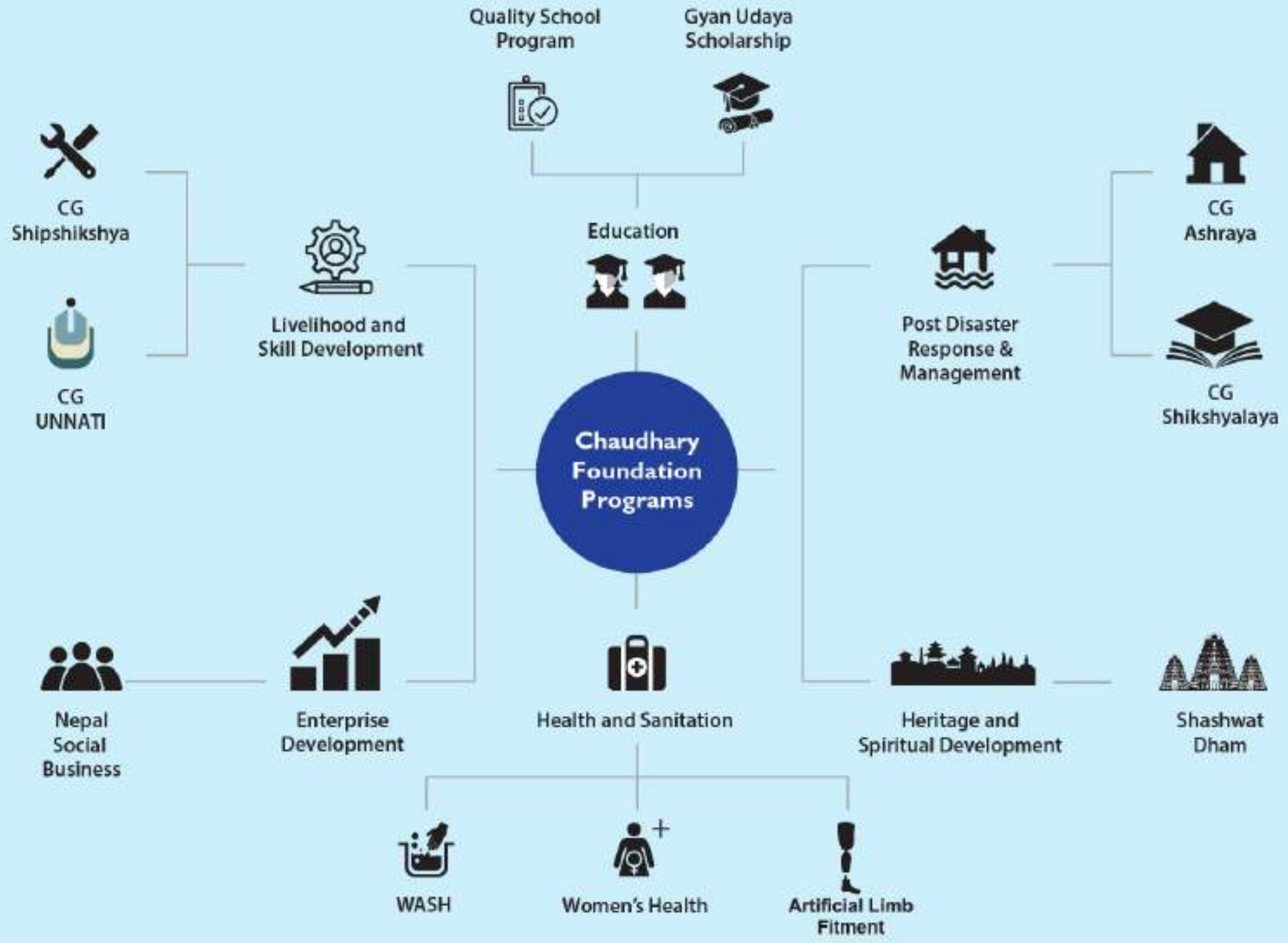


# CHAUDHARY | FOUNDATION









**1** NO POVERTY



**2** ZERO HUNGER



**3** GOOD HEALTH AND WELL-BEING



**4** QUALITY EDUCATION



**5** GENDER EQUALITY



**6** CLEAN WATER AND SANITATION



**7** AFFORDABLE AND CLEAN ENERGY



**8** DECENT WORK AND ECONOMIC GROWTH



**9** INDUSTRY INNOVATION AND INFRASTRUCTURE



**10** REDUCE INEQUALITIES



**11** SUSTAINABLE AND CITIES COMMUNITIES



**12** RESPONSIBLE CONSUMPTION AND PRODUCTION



**13** CLIMATE ACTION



**14** LIFE BELOW WATER



**15** LIFE ON LAND



**16** PEACE, JUSTICE AND STRONG INSTITUTIONS



**17** PARTNERSHIPS FOR THE GOALS



**The Global Goals**  
For Sustainable Development

# ARTIFICIAL LIMB FITMENT CENTER

It's estimated that 100,000+ people need prosthetic limbs in Nepal.

The Artificial Limb Fitment Camps helped 476 beneficiaries get 508 prosthetics from Jan, 11 to Feb, 21.

An average of 15 beneficiaries were served daily with 59 limbs provided to 58 beneficiaries in Kathmandu  
And 449 limbs provided to 418 beneficiaries in Nawalparasi.





# **DIGITAL CLASSROOM**

This initiative has provided 10 schools with:

72 Desktop Computers

21 Laptops

10 Projectors

10 TVs

E-Library Program





# Dolpo Eco-Lodge Project



A stack of five stones is balanced on a rocky outcrop. The stones are of various sizes and shapes, stacked vertically. The background is a clear, turquoise lake with a rocky shoreline on the left. The sky is a pale, hazy blue. The overall scene is serene and natural.

Putting the Shey-Phoksundo  
Trekking Route on the  
Global Trekking Map



## CG PIONEER MEMBER OF BALIYO NEPAL

A unique initiative supported by the Bill and Melinda Gates Foundation to contribute to reduce stunting of children under 5 in Nepal, from 36% today to 15% in 2030

# CG Corp | Global<sup>®</sup>

---

A leading enterprise, comprising over 112 companies, and 76 brands in the global market with a strength of over 10,000 employees



**CG** | FOODS



**CG** | EDUCATION



**CG** | FINANCIAL SERVICES



**CG** | HYDRO POWER



**CG** | HOSPITALITY



**CG** | DEVELOPERS



**CG** | TELECOM



**CG** | MOBILE



**CG** | ELECTRONICS



**CG** | TOBACCO



**CG** | BREWERY



**CG** | REALTY



**CG** | CEMENT



**CG** | INFRA



CHAUDHARY | FOUNDATION

# HARVARD BUSINESS SCHOOL

---

Numerous reports have found that investors are increasingly turning to Environmental, Social, and Governance metrics to analyse an organization's ethical impact and sustainability practices. They look at factors such as a company's carbon footprint, water usage, community development efforts, and bio diversity.

# BOSTON CONSULTING GROUP, MIT

---

Study showed that 44% of investors choose to divest from companies with poor sustainability performance.

# UNILEVER

---

Found that 33 % of consumers want to buy from brands  
“Doing Social or Environmental Good”





CG Hospitality brings cutting-edge concepts to life in hotels, resorts, residences and spas across Asia, Middle East and Africa with a portfolio of bold, desirable and innovative products that cross all frontiers and redefine standards.



# THE GLOBAL Presence

GG Hospitality has presence in three continents: Asia, Africa and North America. Currently, operations are spread over nine countries with expansion underway in Thailand and Bhutan, bringing the total to eleven countries.

COUNTRY	EXISTING HOTELS	PIPELINE HOTELS	TOTAL PORTFOLIO
NEPAL	7	7	14
SRI LANKA	16		16
CHINA	2		2
BHUTAN		1	1
PHILIPPINES	1		1
INDIA	60	27	87
UNITED STATES	1		1
DUBAI	1		1
MALDIVES	2		2
SEYCHELLES	4		4
THAILAND		1	1
<b>TOTAL</b>	<b>94</b>	<b>36</b>	<b>130</b>

Total Portfolio as on January 2019 including CSR Project.





# THE FARM

AT SAN BENITO

A LIFE CHANGING HOLIDAY

















ozone H-810  
hyperbaric chamber







